

YOUR BEST WAREHOUSE PARTNER!



WAREHOUSING & DISTRIBUTION PRESENTATION

ABOUT SEVENSEAS

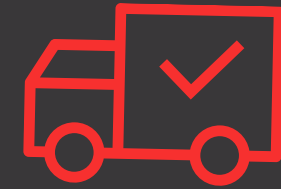
- Established in 2001 in Bangalore, India, Sevenseas has grown to include 18 branches across major Indian cities.
- Over the past two decades, Sevenseas has evolved into a reputable international logistics service provider.
- Our comprehensive services cover Air and Ocean forwarding, Inland transportation, Warehousing & Distribution, and Customs clearance.
- The strength of Sevenseas lies in its experienced staff and a robust network of global partners, complemented by a strategically located network of 18 branches across India.



WHY CHOOSE US?



**GLOBAL
NETWORK**



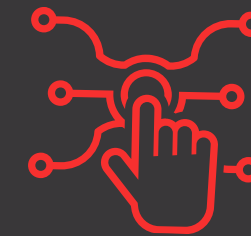
**COMPREHENSIVE
SERVICES**



**CUSTOMER
APPROACH**



**EXPERT
ADVISOR**



**ADVANCED
TECHNOLOGY**



**EXPERIENCED
TEAM**



**GUARANTEED
DELIVERY**



**RELIABILITY &
TIMELINESS**

OUR VERTICALS



SEVENSEAS GLOBAL EXPRESS

Offers global logistics solutions, specializing in air and ocean forwarding for seamless international trade.



SEVENSEAS METRO EXPRESS

Specializes in inland transportation, ensuring efficient and reliable domestic logistics within metropolitan areas.



SEVENSEAS WAREHOUSING

Provides secure storage and distribution services, managing inventory effectively through strategically located warehouses.

OUR SERVICES



AIR FORWARDING



OCEAN FORWARDING



PROJECT MOVEMENT



CUSTOM CLEARANCE



**MULTIMODAL
DISTRIBUTION**



MARINE LOGISTICS



**DOMESTIC EXPRESS
DISTRIBUTION**



**WAREHOUSING &
DISTRIBUTION**

WAREHOUSING AND DISTRIBUTION

- Total space handled across India :
Warehouse + Hubs = **1,50,000 sqft**
- Shared Logistics Capabilities for
Customizable Services
- Real-time Inventory Access
- State-of-the-Art System: Barcode
Scanning, Compliance Labeling,
Space Optimization
- Cost Reduction
- Focus on Core Activities for Clients
- Skilled Logistics Professionals
- Reduction in Transportation,
Warehousing, Distribution, and
Inventory Costs

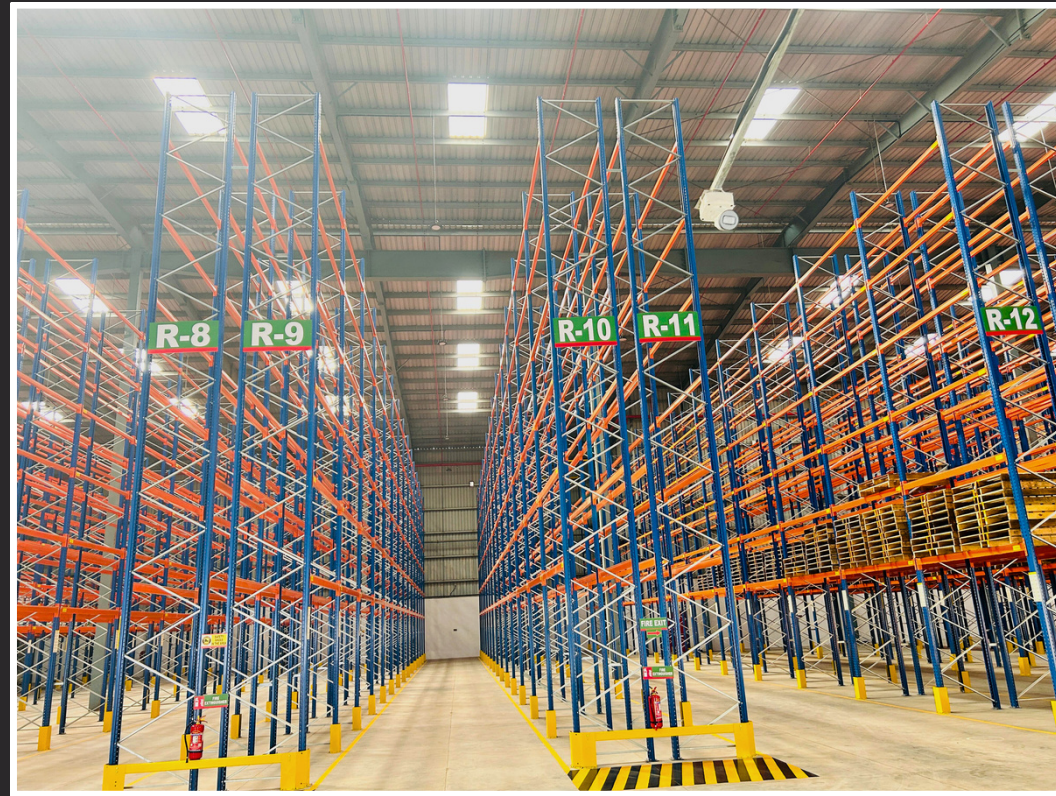
MISSION 2027 - One million WH spaces across India

WAREHOUSE - BHIWANDI

- Fire-hydrant, Smoke detector alarm system
- Heavy duty racking system
- RT< FLTs, BOPT, Dock levelers & standard equipments
- Food customers with FSSAI compliance
- Trimax Flooring & load-bearing capacity



- Use of Scanners for Pick & Pull-away
- Power backup, network connectivity
- CCTV Surveillance
- Parking Area
- **Proximity to Mumbai-Delhi Expressway**



WAREHOUSE - GURGAON

- The facility is located at a distance of 100 mtrs from Jaipur Highway.
- The facility can be handed over on per sqft basis, or we can do the racking as per your requirement



- The facility has adequate staff and can function 24X7 as per your requirement
- The WMS can be integrated with your system

WAREHOUSE - BANGALORE

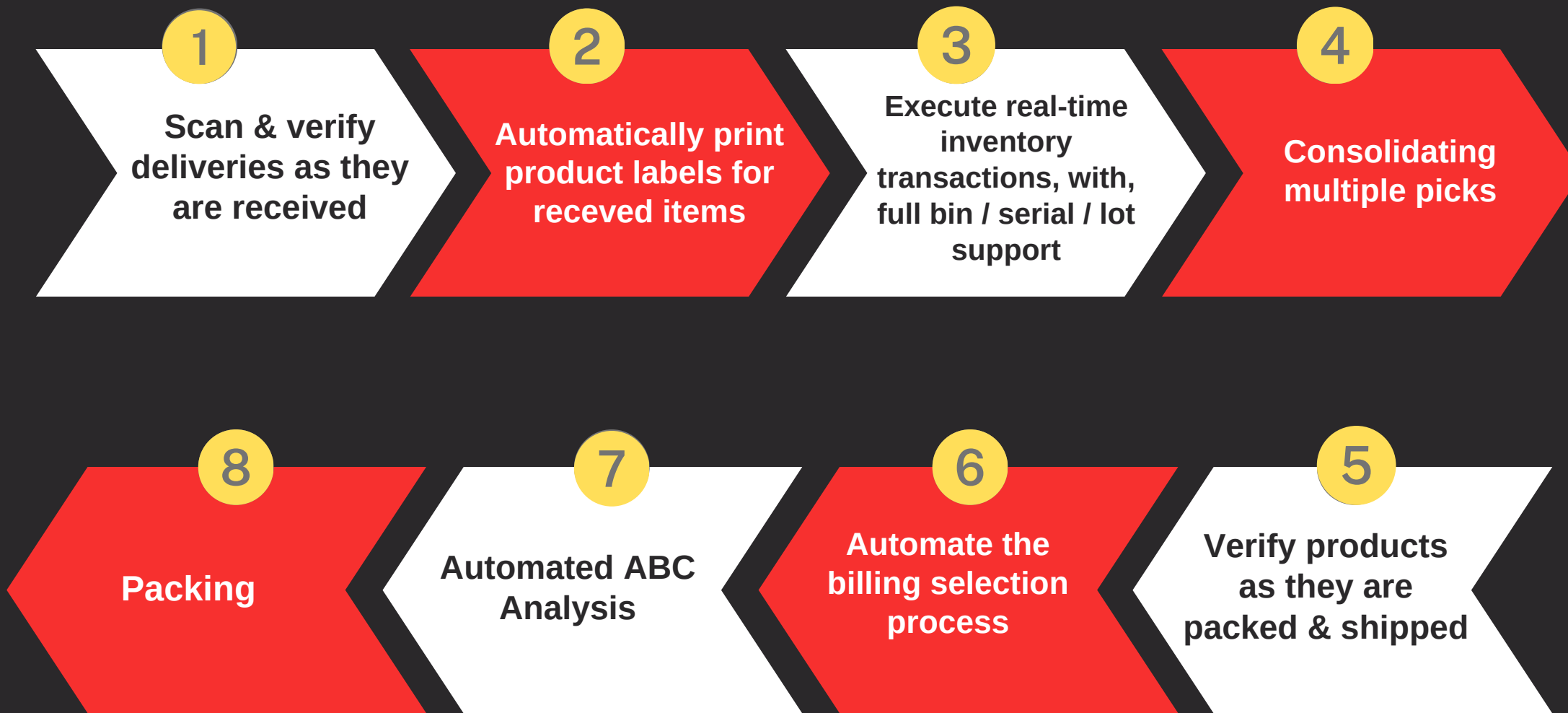
- We can even offer racking up the facility at Doddbellapur as per your requirement
- Heavy-duty racking system
- RT< FLTs, BOPT, Dock levelers & standard equipments



- Staff who can operate 24x7 based on your requirement
- WMS which can be integrated with your software

WAREHOUSE MANAGEMENT SYSTEM

- For seamless operation, and 100% accuracy, we provide High End IT Support with WMS - TMS - Driver Monitoring App - we look forward to enhance our capabilities with every opportunity that comes



IT SERVICES WAREHOUSE MANAGEMENT FUNCTIONALITY



PROCESS SUPPORT

- Receiving (Pre-advised based, UPI based Ean 128)
- Put-away
- Replenishment
- Picking
- Packing
- Dock management and vehicle loading
- Shipping

MODE OF OPERATION

- Paperless
- System directed
- RF based
- Voice based
- Serial number management
- Batch management
- GST management

SYSTEM CHARACTERISTICS

- Multi-site management
- Routing
- ADR Handling
- Bonded nad free goods
- VMI
- Kitting / Assembly management
- Product expiry management
- Cycle counting
- Reporting
 - Inventory
 - Performance
 - Quality

Receiving

Putaway

Storage

Order Preparation

Replenishment

Picking

Packing

Loading

Shipping

ORDER STATUS

- Monitor the status of pre-advices & outbound orders
- Show the contents of pre-advices & outbound orders
- Tracking and tracing of outbound orders

REPORTS

- Run global and customer specific reports

STOCK TRANSACTIONS

- Receiving, shipping and adjustment transactions that have applied to a certain SKU in a certain period

STOCK POSITION

- Stock levels
- Order line allocations

STOCK TRANSACTIONS

- Create address book entries for faster pre-advices and order entry

SKU LIST

- Create and modify SKUs

HSN STANDARDS & OPERATIONS

- Identifying, assessing and managing HSEQ risks connected with our business, products and services
- Meeting legal requirements, customer needs, industry best practice, minimizing risk and preventing pollution
- Ensuring personnel are competent to fulfill their duties
- Co-operation and co-ordination with consultants, contractors and legislative bodies
- Evaluating and monitoring compliance with relevant legal and other requirements by the application of measurement techniques
- Analysis of data resulting from monitoring and measuring activities to ensure customer needs are met, conformance with identified requirements and to assess the effectiveness of the IMS.



- ✓ Safety Induction Program
- ✓ Personal Protective Equipment
- ✓ Availabilities of First Aid Kits
- ✓ Traffic Management
- ✓ Manual Handling
- ✓ Working with Height
- ✓ Fire Safety Plan & Protection system
- ✓ Local Legislative
- ✓ Engagement, Consultation, Communication
- ✓ Transport Safety
- ✓ Dangerous Goods & Hazardous material
- ✓ Risk Assessment
- ✓ Incident Reporting & Management
- ✓ Training & Competency
- ✓ Health & Fitness
- ✓ Contractor Management

CORPORATE OFFICES

- 📍 Bangalore
- 📍 Chennai
- 📍 Cochin
- 📍 Tuticorin
- 📍 Karur
- 📍 Coimbatore
- 📍 Noida
- 📍 Gurugram
- 📍 Hyderabad
- 📍 Pune
- 📍 Vapi
- 📍 Vizag
- 📍 Kolkata
- 📍 Faridabad
- 📍 Mumbai
- 📍 New Delhi
- 📍 Nagpur
- 📍 Mundra
- 📍 Ahmedabad
- 📍 Nashik

LET'S TALK AND FIND YOUR SOLUTION

WEBSITE

www.sevenseasexpress.com

CALL US

+91 80 - 42694000

SEND US AN EMAIL

info@sevenseasexpress.com

